

Single Family Monthly Sales Volume

For Month Ending 1/31/2007

Area Name	Current Month			Previous Month			Year Ago Month		
	Units	Volume	Median	Units	Volume	Median	Units	Volume	Median
Central	47	\$21,701,943	\$504,124	67	\$32,450,095	\$451,250	32	\$19,976,350	\$609,500
Haiku	4	\$2,652,000	\$603,500	5	\$5,742,000	\$895,000	4	\$9,256,650	\$2,288,325
Kaanapali	4	\$8,526,750	\$2,300,875	1	\$1,200,000	\$1,200,000	1	\$1,700,000	\$1,700,000
Kapalua	2	\$23,090,000	1,545,000	0	\$0	\$0	0	\$0	\$0
Keanae	0	\$0	\$0	1	\$234,000	\$234,000	0	\$0	\$0
Kihei	6	\$4,890,553	\$819,500	11	\$9,225,825	\$770,000	18	\$13,751,400	\$703,750
Kula/Ulupalakua/Kanaio	7	\$4,851,500	\$660,000	6	\$5,781,374	\$876,937	5	\$6,000,000	\$865,000
Lahaina	4	\$11,275,000	\$805,000	7	\$8,690,000	\$875,000	3	\$2,495,000	\$860,000
Makawao/Olinda/Haliimaile	7	\$3,994,000	\$560,000	7	\$5,881,000	\$560,000	6	\$3,119,900	\$532,500
Maui Meadows	0	\$0	\$0	1	\$875,000	\$875,000	5	\$5,870,000	\$1,100,000
Napili/Kahana/Honokowai	2	\$1,900,000	\$950,000	6	\$5,870,000	\$895,000	2	\$5,930,000	\$2,965,000
Pukalani	7	\$5,284,000	\$695,000	3	\$1,778,000	\$650,000	6	\$4,311,800	\$695,513
Sprecklesville/Paia/Kuau	2	\$1,145,000	\$572,500	1	\$580,000	\$580,000	0	\$0	\$0
Wailea/Makena	17	\$56,813,740	\$1,452,825	17	\$22,954,968	\$1,318,749	4	\$22,635,000	\$5,630,000
Maui Summary :	109	\$146,124,486	\$625,000	133	\$101,262,262	\$635,000	86	\$95,046,100	\$690,500

Condominium Monthly Sales Volume

For Month Ending 1/31/2007

Area Name	Current Month			Previous Month			Year Ago Month		
	Units	Volume	Median	Units	Volume	Median	Units	Volume	Median
Central	5	\$1,637,000	\$300,000	10	\$2,936,000	\$293,500	24	\$6,954,920	\$284,050
Haiku	0	\$0	\$0	0	\$0	\$0	1	\$650,000	\$650,000
Kaanapali	9	\$10,588,500	\$1,350,000	2	\$2,167,000	\$1,083,500	2	\$2,183,000	\$1,091,500
Kapalua	6	\$11,705,000	\$1,397,500	1	\$760,000	\$760,000	3	\$6,325,000	\$1,100,000
Kihei	21	\$9,329,600	\$400,000	26	\$9,947,000	\$322,500	48	\$22,242,100	\$430,000
Lahaina	11	\$6,088,000	\$529,000	13	\$9,003,000	\$559,000	6	\$2,982,000	\$332,500
Maalaea	5	\$2,642,500	\$515,000	1	\$323,000	\$323,000	3	\$1,499,000	\$489,000
Molokai	1	\$216,000	\$216,000	1	\$250,000	\$250,000	1	\$315,000	\$315,000
Napili/Kahana/Honokowai	11	\$4,709,500	\$450,000	15	\$11,709,999	\$620,000	31	\$17,084,643	\$575,000
Pukalani	0	\$0	\$0	0	\$0	\$0	1	\$665,000	\$665,000
Sprecklesville/Paia/Kuau	0	\$0	\$0	0	\$0	\$0	1	\$2,060,000	\$2,060,000
Wailea/Makena	16	\$35,572,000	\$992,500	4	\$10,525,000	\$2,490,000	9	\$14,514,500	\$894,500
Maui Summary :	85	\$82,488,100	\$555,000	73	\$47,620,999	\$470,000	130	\$77,475,163	\$433,872

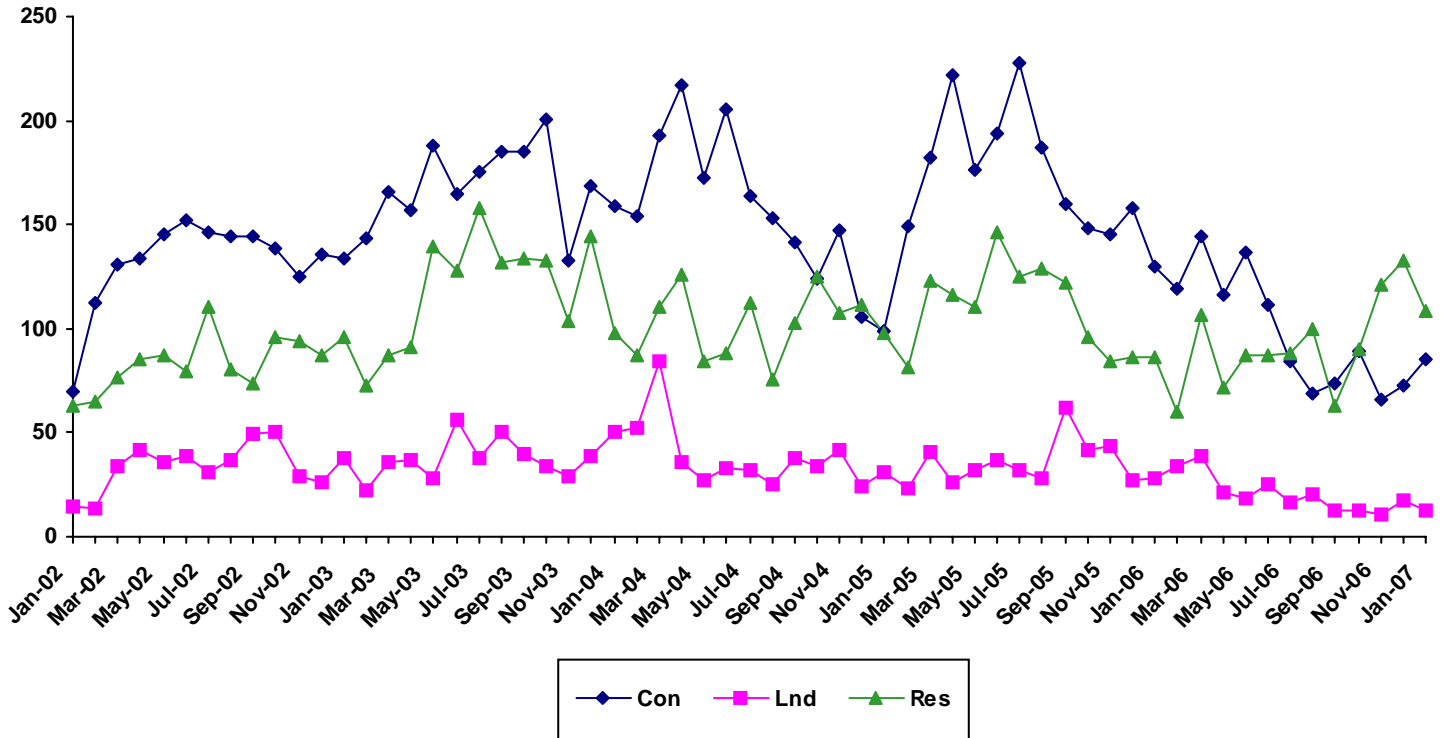
Land Monthly Sales Volume

For Month Ending 1/31/2007

Area Name	Current Month			Previous Month			Year Ago Month		
	Units	Volume	Median	Units	Volume	Median	Units	Volume	Median
Central	4	\$3,069,000	\$383,000	4	\$3,186,668	\$690,834	13	\$4,943,670	\$340,424
Haiku	2	\$845,000	\$422,500	1	\$355,000	\$355,000	1	\$785,000	\$785,000
Kaanapali	1	\$769,000	\$769,000	1	\$593,000	\$593,000	1	\$1,500,000	\$1,500,000
Kapalua	1	\$2,015,000	\$2,015,000	1	\$1,550,000	\$1,550,000	0	\$0	\$0
Kihei	0	\$0	\$0	2	\$2,840,000	\$1,420,000	3	\$1,835,000	\$550,000
Kipahulu	0	\$0	\$0	0	\$0	\$0	1	\$1,550,000	\$1,550,000
Kula/Ulupalakua/Kanaio	1	\$700,000	\$700,000	3	\$13,050,000	\$4,000,000	2	\$964,000	\$482,000
Lahaina	1	\$1,250,000	\$1,250,000	3	\$2,557,472	\$767,472	3	\$2,506,602	\$694,892
Maui Meadows	0	\$0	\$0	1	\$575,000	\$575,000	0	\$0	\$0
Molokai	1	\$90,000	\$90,000	0	\$0	\$0	1	\$515,000	\$515,000
Nahiku	0	\$0	\$0	0	\$0	\$0	1	\$370,000	\$370,000
Olowalu	1	\$1,395,000	\$1,395,000	0	\$0	\$0	0	\$0	\$0
Pukalani	0	\$0	\$0	1	\$335,000	\$335,000	0	\$0	\$0
Sprecklesville/Paia/Kuau	0	\$0	\$0	0	\$0	\$0	1	\$600,000	\$600,000
Wailea/Makena	1	\$2,800,000	\$2,800,000	0	\$0	\$0	1	\$1,250,000	\$1,250,000
Maui Summary :	13	\$12,933,000	\$700,000	17	\$25,042,140	\$767,472	28	\$16,819,272	\$430,000

Sales Volume By Month

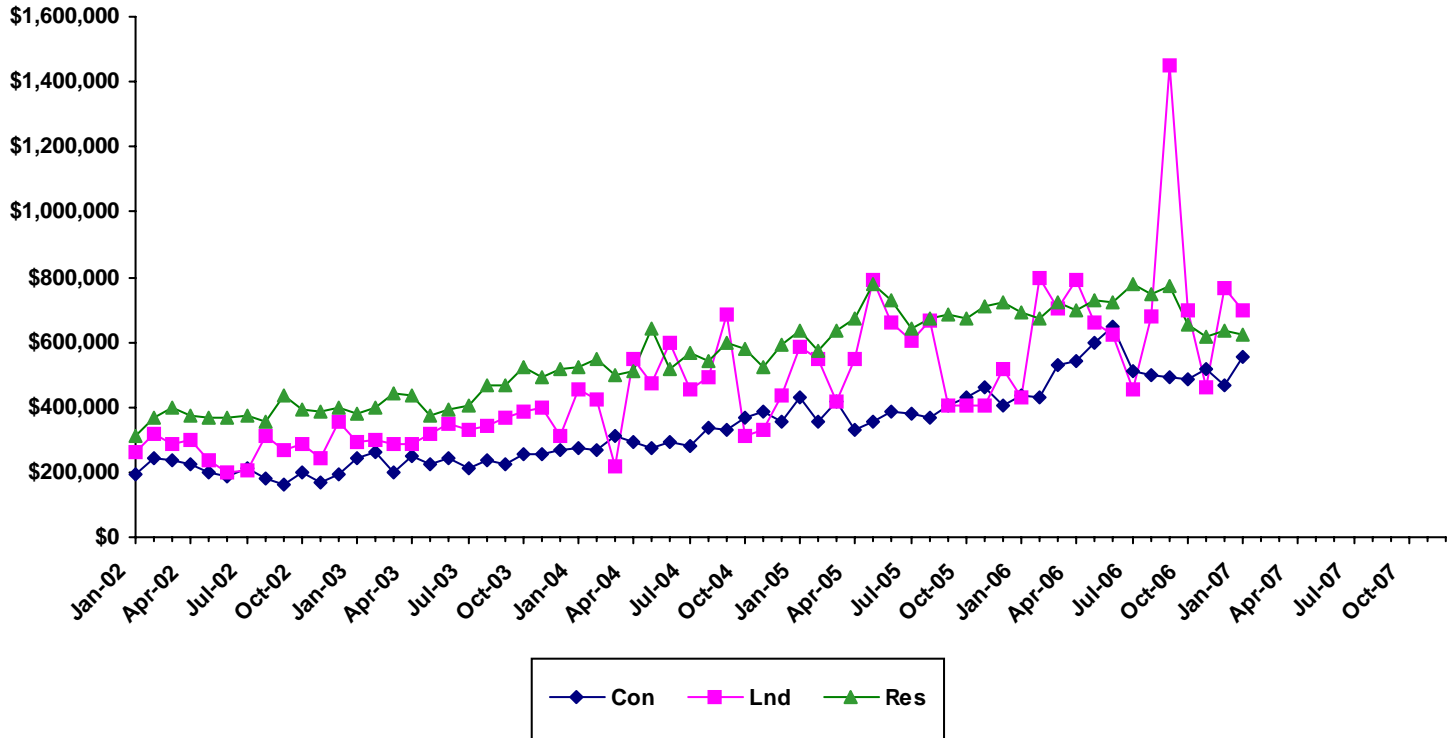
For Month Ending 1/31/2007



Month	2002			2003			2004			2005			2006			2007		
	Single Family	Condo	Land	Single Family	Condo	Land	Single Family	Condo	Land	Single Family	Condo	Land	Single Family	Condo	Land	Single Family	Condo	Land
Jan	63	70	15	96	134	38	98	159	50	98	99	31	86	130	28	109	85	13
Feb	65	112	14	73	143	22	87	154	52	81	149	23	60	119	34			
Mar	77	131	34	87	166	36	110	193	84	123	182	41	107	144	39			
Apr	85	134	42	91	157	37	126	217	36	116	222	26	72	116	21			
May	87	145	36	140	188	28	84	172	27	110	176	32	87	137	18			
Jun	79	152	39	128	165	56	88	205	33	146	194	37	87	111	25			
Jul	110	146	31	158	175	38	112	164	32	125	228	32	88	84	16			
Aug	80	144	37	132	185	50	76	153	25	129	187	28	100	69	20			
Sep	74	144	49	134	185	40	103	141	38	122	160	62	63	74	13			
Oct	96	139	50	133	201	34	125	124	34	96	148	42	90	89	13			
Nov	94	125	29	104	133	29	108	147	42	84	145	44	121	66	11			
Dec	87	136	26	144	169	39	111	106	24	86	158	27	133	73	17			

Sales Median By Month

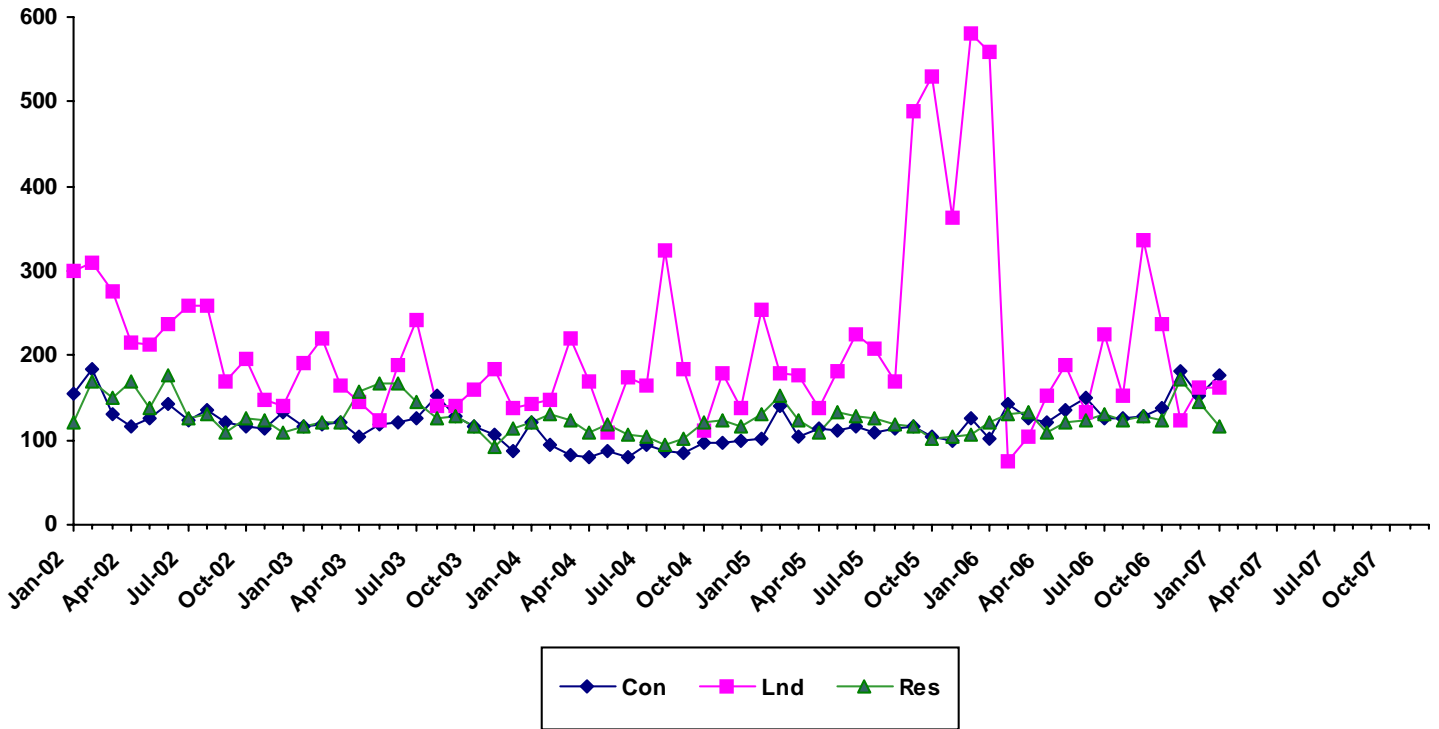
For Month Ending 1/31/2007



Month	2002			2003			2004			2005			2006			2007		
	Single Family	Condo	Land	Single Family	Condo	Land	Single Family	Condo	Land	Single Family	Condo	Land	Single Family	Condo	Land	Single Family	Condo	Land
Jan	310000	191000	262760	379500	239810	292500	520000	275000	454500	632500	430000	584100	690500	433870	430000	625000	555000	700000
Feb	367000	245000	315000	400000	260000	298500	550000	267450	421500	575000	353523	550000	669500	430100	800000			
Mar	400000	238000	287500	442000	199750	284750	499000	310000	218750	635000	416250	415000	725000	527625	701000			
Apr	375000	226250	301501	436739	250000	285000	512500	295000	550000	674000	329500	547500	700000	539500	790000			
May	369000	199000	237760	372500	222500	316450	640000	277000	475000	780000	352500	793750	729000	600000	657500			
Jun	365000	187990	200000	395000	243000	350000	516000	295000	600000	727500	387500	662145	725000	649000	625000			
Jul	375000	210000	205000	406500	214000	328000	567000	277425	452500	642600	380000	603479	780000	512500	452500			
Aug	352000	179500	310000	468500	235000	340000	542500	339000	490000	670000	366500	667500	749500	495000	680000			
Sep	437000	159500	268000	464500	222000	369500	596000	330000	687500	687250	405000	405000	769000	494500	1450000			
Oct	391220	200000	284775	520000	255000	388000	580000	367500	312500	674500	429500	405000	655000	485000	700000			
Nov	388500	168000	242500	492500	255000	398050	525000	385000	333000	707000	460000	405000	615000	515000	460000			
Dec	400000	196000	355000	515000	269000	310150	590000	355000	436000	722500	402500	514000	635000	470000	767472			

Sales Days on Market By Month

For Month Ending 1/31/2007



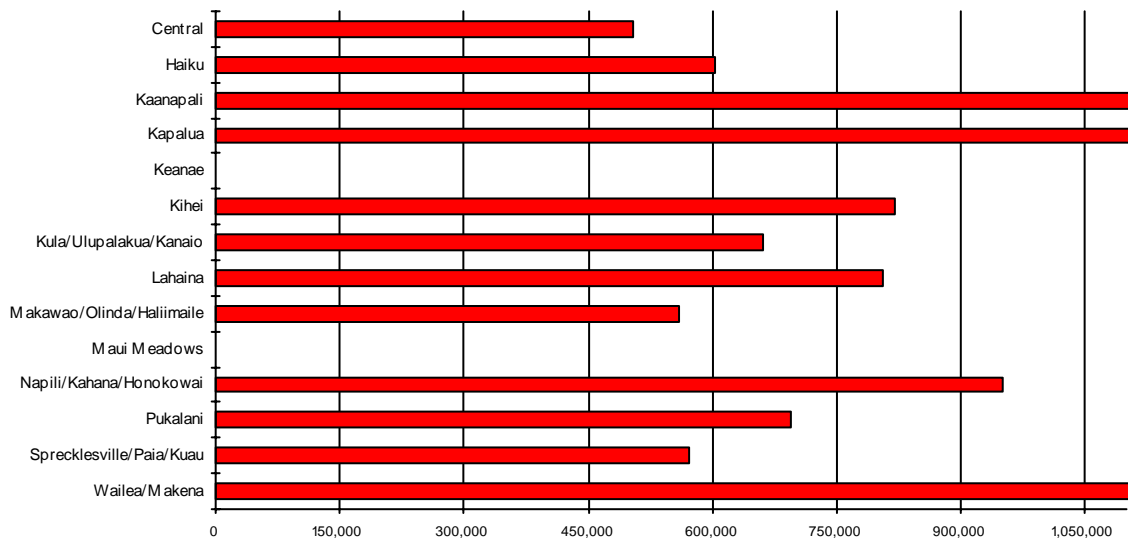
	2002			2003			2004			2005			2006			2007		
Month	Single Family	Condo	Land	Single Family	Condo	Land	Single Family	Condo	Land	Single Family	Condo	Land	Single Family	Condo	Land	Single Family	Condo	Land
Jan	122	156	299	117	116	191	120	121	143	132	102	255	121	102	558	115	176	162
Feb	169	185	310	122	119	219	130	95	148	153	140	179	130	144	75			
Mar	150	130	275	120	120	165	124	83	221	123	104	176	134	126	104			
Apr	170	117	215	158	103	145	109	79	170	110	113	139	108	121	152			
May	139	127	212	167	119	125	119	86	108	132	111	181	121	136	189			
Jun	176	142	236	167	122	190	106	80	175	128	116	224	123	151	133			
Jul	125	124	258	146	125	242	105	95.5	166	126	109	207	131	127	224			
Aug	131	135	259	125	153	141	95	87	325	119	115	170	125	126	153			
Sep	109	120	170	128	128	140	101	85	184	117	115	489	129	128	337			
Oct	125	117	195	116	115	161	120	96	113	101	103	530	123	139	236			
Nov	123	114	148	93	106	184	123	97	180	104	100	363	171	181	124			
Dec	109	134	142	113	88	138	117	98	139	106	126	580	146	152	161			

SOURCE: REALTORS Association of Maui - www.RAMaui.com
 MLS Sale data - Information deemed reliable, however not guaranteed

Single Family Median Prices by Area

For Month Ending 1/31/2007

Current Month Information

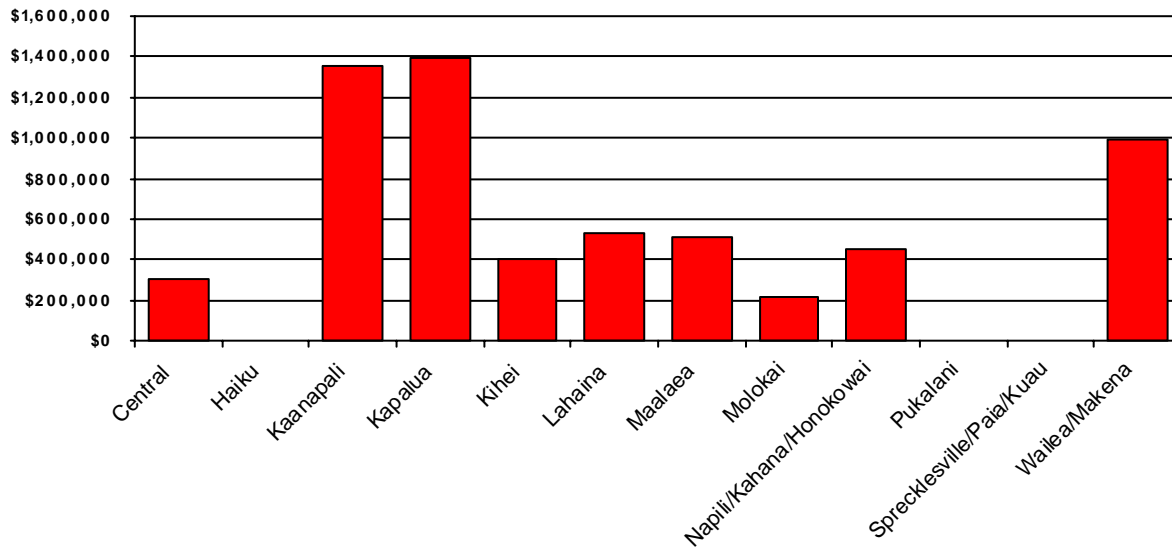


Area	Current Month	Previous Month	Year Ago Month
Central	\$504,124	\$451,250	\$609,500
Haiku	\$603,500	\$895,000	\$2,288,325
Kaanapali	\$2,300,875	\$1,200,000	\$1,700,000
Kapalua	\$11,545,000	\$0	\$0
Keanae	\$0	\$234,000	\$0
Kihei	\$819,500	\$770,000	\$703,750
Kula/Ulupalakua/Kanaio	\$660,000	\$876,937	\$865,000
Lahaina	\$805,000	\$875,000	\$860,000
Makawao/Olinda/Haliimaile	\$560,000	\$560,000	\$532,500
Maui Meadows	\$0	\$875,000	\$1,100,000
Napili/Kahana/Honokowai	\$950,000	\$895,000	\$2,965,000
Pukalani	\$695,000	\$650,000	\$695,513
Sprecklesville/Paia/Kuau	\$572,500	\$580,000	\$0
Wailea/Makena	\$1,452,825	\$1,318,749	\$5,630,000

Condominium Median Prices by Area

For Month Ending 1/31/2007

Current Month Information

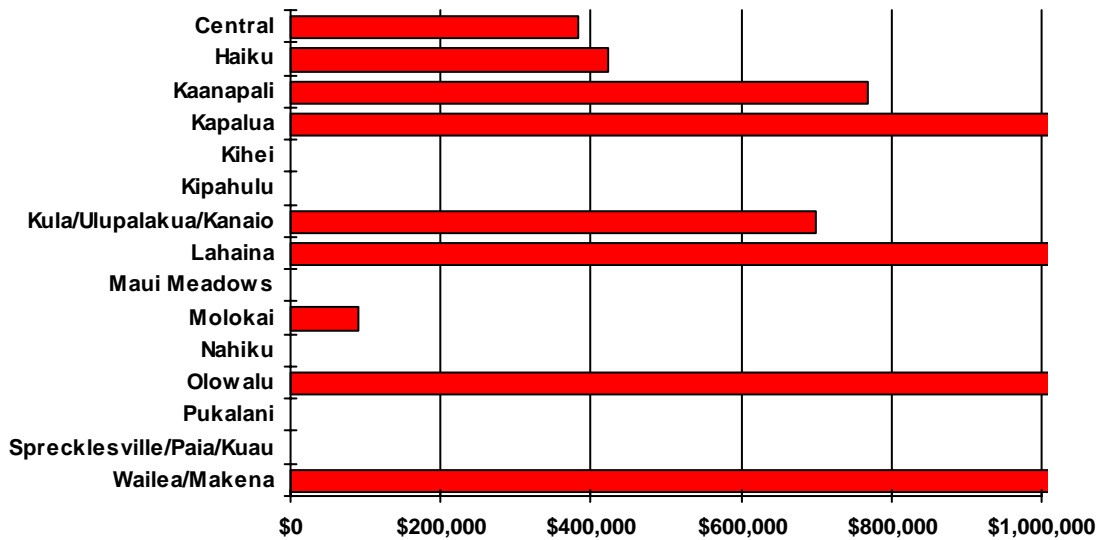


Area	Current Month	Previous Month	Year Ago Month
Central	\$300,000	\$293,500	\$284,050
Haiku	\$0	\$0	\$650,000
Kaanapali	\$1,350,000	\$1,083,500	\$1,091,500
Kapalua	\$1,397,500	\$760,000	\$1,100,000
Kihei	\$400,000	\$322,500	\$430,000
Lahaina	\$529,000	\$559,000	\$332,500
Maalaea	\$515,000	\$323,000	\$489,000
Molokai	\$216,000	\$250,000	\$315,000
Napili/Kahana/Honokowai	\$450,000	\$620,000	\$575,000
Pukalani	\$0	\$0	\$665,000
Sprecklesville/Paia/Kuau	\$0	\$0	\$2,060,000
Wailea/Makena	\$992,500	\$2,490,000	\$894,500

Land Median Prices by Area

For Month Ending 1/31/2007

Current Month Information



Area	Current Month	Previous Month	Year Ago Month
Central	\$383,000	\$690,834	\$340,424
Haiku	\$422,500	\$355,000	\$785,000
Kaanapali	\$769,000	\$593,000	\$1,500,000
Kapalua	\$2,015,000	\$1,550,000	\$0
Kihei	\$0	\$1,420,000	\$550,000
Kipahulu	\$0	\$0	\$1,550,000
Kula/Ulupalakua/Kanaio	\$700,000	\$4,000,000	\$482,000
Lahaina	\$1,250,000	\$767,472	\$694,892
Maui Meadows	\$0	\$575,000	\$0
Molokai	\$90,000	\$0	\$515,000
Nahiku	\$0	\$0	\$370,000
Olowalu	\$1,395,000	\$0	\$0
Pukalani	\$0	\$335,000	\$0
Sprecklesville/Paia/Kuau	\$0	\$0	\$600,000
Wailea/Makena	\$2,800,000	\$0	\$1,250,000

Single Family Year To Date Sales Information

Comparing 1/1/2007 thru 1/31/2007 with 1/1/2006 thru 1/31/2006

Area	Number of Sales				Average Sales Price			Median Sales Price			Total Dollar Volume		
	Current YTD Sales	Year Ago YTD	Changes Units	%	Current YTD Average	Year Ago YTD Average	Percent Change	Current YTD Median	Year Ago YTD Median	Percent Change	Current YTD Volume	Year Ago YTD Volume	Percent Change
Central	47	32	15	47%	\$461,743	\$624,261	-26%	\$504,124	\$609,500	-17%	\$21,701,943	\$19,976,350	9%
Haiku	4	4	0	0%	\$663,000	\$2,314,163	-71%	\$603,500	\$2,288,325	-74%	\$2,652,000	\$9,256,650	-71%
Hana	0	0	0	N/A	\$0	\$0	N/A	\$0	\$0	N/A	\$0	\$0	N/A
Kaanapali	4	1	3	300%	\$2,131,688	\$1,700,000	25%	\$2,300,875	\$1,700,000	35%	\$8,526,750	\$1,700,000	402%
Kapalua	2	0	2	N/A	\$11,545,000	\$0	N/A	\$11,545,000	\$0	N/A	\$23,090,000	\$0	N/A
Keanae	0	0	0	N/A	\$0	\$0	N/A	\$0	\$0	N/A	\$0	\$0	N/A
Kihei	6	18	-12	-67%	\$815,092	\$763,967	7%	\$819,500	\$703,750	16%	\$4,890,553	\$13,751,400	-64%
Kula/Ulupalakua/Kanaio	7	5	2	40%	\$693,071	\$1,200,000	-42%	\$660,000	\$865,000	-24%	\$4,851,500	\$6,000,000	-19%
Lahaina	4	3	1	33%	\$2,818,750	\$831,667	239%	\$805,000	\$860,000	-6%	\$11,275,000	\$2,495,000	352%
Lanai	0	0	0	N/A	\$0	\$0	N/A	\$0	\$0	N/A	\$0	\$0	N/A
Makawao/Olinda/Haliimaile	7	6	1	17%	\$570,571	\$519,983	10%	\$560,000	\$532,500	5%	\$3,994,000	\$3,119,900	28%
Maui Meadows	0	5	-5	-100%	\$0	\$1,174,000	-100%	\$0	\$1,100,000	-100%	\$0	\$5,870,000	-100%
Molokai	0	0	0	N/A	\$0	\$0	N/A	\$0	\$0	N/A	\$0	\$0	N/A
Nahiku	0	0	0	N/A	\$0	\$0	N/A	\$0	\$0	N/A	\$0	\$0	N/A
Napili/Kahana/Honokowai	2	2	0	0%	\$950,000	\$2,965,000	-68%	\$950,000	\$2,965,000	-68%	\$1,900,000	\$5,930,000	-68%
Pukalani	7	6	1	17%	\$754,857	\$718,633	5%	\$695,000	\$695,513	0%	\$5,284,000	\$4,311,800	23%
Sprecklesville/Paia/Kuau	2	0	2	N/A	\$572,500	\$0	N/A	\$572,500	\$0	N/A	\$1,145,000	\$0	N/A
Wailea/Makena	17	4	13	325%	\$3,341,985	\$5,658,750	-41%	\$1,452,825	\$5,630,000	-74%	\$56,813,740	\$22,635,000	151%
Maui Summary:	109	86	23	27%	\$1,340,592	\$1,105,187	21%	\$625,000	\$690,500	-9%	\$146,124,486	\$95,046,100	54%

Condominium Year To Date Sales Information

Comparing 1/1/2007 thru 1/31/2007 with 1/1/2006 thru 1/31/2006

Area	Number of Sales				Average Sales Price			Median Sales Price			Total Dollar Volume		
	Current YTD Sales	Year Ago YTD	Changes Units	%	Current YTD Average	Year Ago YTD Average	Percent Change	Current YTD Median	Year Ago YTD Median	Percent Change	Current YTD Volume	Year Ago YTD Volume	Percent Change
Central	5	24	-19	-79%	\$327,400	\$289,788	13%	\$300,000	\$284,050	6%	\$1,637,000	\$6,954,920	-76%
Haiku	0	1	-1	-100%	\$0	\$650,000	-100%	\$0	\$650,000	-100%	\$0	\$650,000	-100%
Hana	0	0	0	N/A	\$0	\$0	N/A	\$0	\$0	N/A	\$0	\$0	N/A
Kaanapali	9	2	7	350%	\$1,176,500	\$1,091,500	8%	\$1,350,000	\$1,091,500	24%	\$10,588,500	\$2,183,000	385%
Kapalua	6	3	3	100%	\$1,950,833	\$2,108,333	-7%	\$1,397,500	\$1,100,000	27%	\$11,705,000	\$6,325,000	85%
Kihei	21	48	-27	-56%	\$444,267	\$463,377	-4%	\$400,000	\$430,000	-7%	\$9,329,600	\$22,242,100	-58%
Lahaina	11	6	5	83%	\$553,455	\$497,000	11%	\$529,000	\$332,500	59%	\$6,088,000	\$2,982,000	104%
Lanai	0	0	0	N/A	\$0	\$0	N/A	\$0	\$0	N/A	\$0	\$0	N/A
Maalaea	5	3	2	67%	\$528,500	\$499,667	6%	\$515,000	\$489,000	5%	\$2,642,500	\$1,499,000	76%
Makawao/Olinda/Haliimaile	0	0	0	N/A	\$0	\$0	N/A	\$0	\$0	N/A	\$0	\$0	N/A
Molokai	1	1	0	0%	\$216,000	\$315,000	-31%	\$216,000	\$315,000	-31%	\$216,000	\$315,000	-31%
Napili/Kahana/Honokowai	11	31	-20	-65%	\$428,136	\$551,118	-22%	\$450,000	\$575,000	-22%	\$4,709,500	\$17,084,643	-72%
Pukalani	0	1	-1	-100%	\$0	\$665,000	-100%	\$0	\$665,000	-100%	\$0	\$665,000	-100%
Sprecklesville/Paia/Kuau	0	1	-1	-100%	\$0	\$2,060,000	-100%	\$0	\$2,060,000	-100%	\$0	\$2,060,000	-100%
Wailea/Makena	16	9	7	78%	\$2,223,250	\$1,612,722	38%	\$992,500	\$894,500	11%	\$35,572,000	\$14,514,500	145%
Maui Summary:	85	130	-45	-35%	\$970,448	\$595,963	63%	\$555,000	\$433,872	28%	\$82,488,100	\$77,475,163	6%

Fee Simple Condominium Year To Date Sales Information

Comparing 1/1/2007 thru 1/31/2007 with 1/1/2006 thru 1/31/2006

Area	Number of Sales				Average Sales Price			Median Sales Price			Total Dollar Volume		
	Current YTD Sales	Year Ago YTD	Changes Units	%	Current YTD Average	Year Ago YTD Average	Percent Change	Current YTD Median	Year Ago YTD Median	Percent Change	Current YTD Volume	Year Ago YTD Volume	Percent Change
Central	5	24	-19	-79%	\$327,400	\$289,788	13%	\$300,000	\$284,050	6%	\$1,637,000	\$6,954,920	-76%
Haiku	0	1	-1	-100%	\$0	\$650,000	-100%	\$0	\$650,000	-100%	\$0	\$650,000	-100%
Hana	0	0	0	N/A	\$0	\$0	N/A	\$0	\$0	N/A	\$0	\$0	N/A
Kaanapali	9	2	7	350%	\$1,176,500	\$1,091,500	8%	\$1,350,000	\$1,091,500	24%	\$10,588,500	\$2,183,000	385%
Kapalua	6	3	3	100%	\$1,950,833	\$2,108,333	-7%	\$1,397,500	\$1,100,000	27%	\$11,705,000	\$6,325,000	85%
Kihei	21	48	-27	-56%	\$444,267	\$463,377	-4%	\$400,000	\$430,000	-7%	\$9,329,600	\$22,242,100	-58%
Lahaina	11	5	6	120%	\$553,455	\$539,000	3%	\$529,000	\$332,500	59%	\$6,088,000	\$2,695,000	126%
Lanai	0	0	0	N/A	\$0	\$0	N/A	\$0	\$0	N/A	\$0	\$0	N/A
Maalaea	4	0	4	N/A	\$505,000	\$0	N/A	\$500,000	\$0	N/A	\$2,020,000	\$0	N/A
Makawao/Olinda/Haliimaile	0	0	0	N/A	\$0	\$0	N/A	\$0	\$0	N/A	\$0	\$0	N/A
Molokai	1	1	0	0%	\$216,000	\$315,000	-31%	\$216,000	\$315,000	-31%	\$216,000	\$315,000	-31%
Napili/Kahana/Honokowai	7	23	-16	-70%	\$456,000	\$594,811	-23%	\$450,000	\$620,000	-27%	\$3,192,000	\$13,680,643	-77%
Pukalani	0	1	-1	-100%	\$0	\$665,000	-100%	\$0	\$665,000	-100%	\$0	\$665,000	-100%
Sprecklesville/Paia/Kuau	0	1	-1	-100%	\$0	\$2,060,000	-100%	\$0	\$2,060,000	-100%	\$0	\$2,060,000	-100%
Wailea/Makena	16	9	7	78%	\$2,223,250	\$1,612,722	38%	\$992,500	\$894,500	11%	\$35,572,000	\$14,514,500	145%
Maui Summary:	80	118	-38	-32%	\$1,004,351	\$612,586	64%	\$555,500	\$440,000	26%	\$80,348,100	\$72,285,163	11%

Leasehold Condominium Year To Date Sales Information

Comparing 1/1/2007 thru 1/31/2007 with 1/1/2006 thru 1/31/2006

Area	Number of Sales				Average Sales Price			Median Sales Price			Total Dollar Volume		
	Current YTD Sales	Year Ago YTD	Changes Units	Changes %	Current YTD Average	Year Ago YTD Average	Percent Change	Current YTD Median	Year Ago YTD Median	Percent Change	Current YTD Volume	Year Ago YTD Volume	Percent Change
Kaanapali	0	0	0	N/A	\$0	\$0	N/A	\$0	\$0	N/A	\$0	\$0	N/A
Kihei	0	0	0	N/A	\$0	\$0	N/A	\$0	\$0	N/A	\$0	\$0	N/A
Lahaina	0	1	-1	-100%	\$0	\$287,000	-100%	\$0	\$287,000	-100%	\$0	\$287,000	-100%
Maalaea	1	3	-2	-67%	\$622,500	\$499,667	25%	\$622,500	\$489,000	27%	\$622,500	\$1,499,000	-58%
Napili/Kahana/Honokowai	4	8	-4	-50%	\$379,375	\$425,500	-11%	\$283,750	\$269,000	5%	\$1,517,500	\$3,404,000	-55%
Maui Summary:	5	12	-7	-58%	\$428,000	\$432,500	-1%	\$310,000	\$369,000	-16%	\$2,140,000	\$5,190,000	-59%

Land Year To Date Sales Information

Comparing 1/1/2007 thru 1/31/2007 with 1/1/2006 thru 1/31/2006

Area	Number of Sales				Average Sales Price			Median Sales Price			Total Dollar Volume		
	Current YTD Sales	Year Ago YTD	Changes Units	Changes %	Current YTD Average	Year Ago YTD Average	Percent Change	Current YTD Median	Year Ago YTD Median	Percent Change	Current YTD Volume	Year Ago YTD Volume	Percent Change
Central	4	13	-9	-69%	\$767,250	\$380,282	102%	\$383,000	\$340,424	13%	\$3,069,000	\$4,943,670	-38%
Haiku	2	1	1	100%	\$422,500	\$785,000	-46%	\$422,500	\$785,000	-46%	\$845,000	\$785,000	8%
Hana	0	0	0	N/A	\$0	\$0	N/A	\$0	\$0	N/A	\$0	\$0	N/A
Kaanapali	1	1	0	0%	\$769,000	\$1,500,000	-49%	\$769,000	\$1,500,000	-49%	\$769,000	\$1,500,000	-49%
Kahakuloa	0	0	0	N/A	\$0	\$0	N/A	\$0	\$0	N/A	\$0	\$0	N/A
Kapalua	1	0	1	N/A	\$2,015,000	\$0	N/A	\$2,015,000	\$0	N/A	\$2,015,000	\$0	N/A
Kaupo	0	0	0	N/A	\$0	\$0	N/A	\$0	\$0	N/A	\$0	\$0	N/A
Keanae	0	0	0	N/A	\$0	\$0	N/A	\$0	\$0	N/A	\$0	\$0	N/A
Kihei	0	3	-3	-100%	\$0	\$611,667	-100%	\$0	\$550,000	-100%	\$0	\$1,835,000	-100%
Kipahulu	0	1	-1	-100%	\$0	\$1,550,000	-100%	\$0	\$1,550,000	-100%	\$0	\$1,550,000	-100%
Kula/Ulupalakua/Kanaio	1	2	-1	-50%	\$700,000	\$482,000	45%	\$700,000	\$482,000	45%	\$700,000	\$964,000	-27%
Lahaina	1	3	-2	-67%	\$1,250,000	\$835,534	50%	\$1,250,000	\$694,892	80%	\$1,250,000	\$2,506,602	-50%
Lanai	0	0	0	N/A	\$0	\$0	N/A	\$0	\$0	N/A	\$0	\$0	N/A
Makawao/Olinda/Haliimaile	0	0	0	N/A	\$0	\$0	N/A	\$0	\$0	N/A	\$0	\$0	N/A
Maui Meadows	0	0	0	N/A	\$0	\$0	N/A	\$0	\$0	N/A	\$0	\$0	N/A
Molokai	1	1	0	0%	\$90,000	\$515,000	-83%	\$90,000	\$515,000	-83%	\$90,000	\$515,000	-83%
Nahiku	0	1	-1	-100%	\$0	\$370,000	-100%	\$0	\$370,000	-100%	\$0	\$370,000	-100%
Napili/Kahana/Honokowai	0	0	0	N/A	\$0	\$0	N/A	\$0	\$0	N/A	\$0	\$0	N/A
Olowalu	1	0	1	N/A	\$1,395,000	\$0	N/A	\$1,395,000	\$0	N/A	\$1,395,000	\$0	N/A
Pukalani	0	0	0	N/A	\$0	\$0	N/A	\$0	\$0	N/A	\$0	\$0	N/A
Sprecklesville/Paia/Kuau	0	1	-1	-100%	\$0	\$600,000	-100%	\$0	\$600,000	-100%	\$0	\$600,000	-100%
Wailea/Makena	1	1	0	0%	\$2,800,000	\$1,250,000	124%	\$2,800,000	\$1,250,000	124%	\$2,800,000	\$1,250,000	124%
Maui Summary:	13	28	-15	-54%	\$994,846	\$600,688	66%	\$700,000	\$430,000	63%	\$12,933,000	\$16,819,272	-23%

SOURCE: REALTORS Association of Maui - www.RAMaui.com
 MLS Sale data - Information deemed reliable, however not guaranteed